

WELCOME TO

21 Hudson Crescent

www.21HudsonSemi.com



ROYAL LEPAGE
CHAIRMAN'S CLUB
NATIONAL TOP 1%
LIFETIME MEMBER

TEAM **ZOLD**

Your Home • Your Life • Your Realtors

Working For You!

www.teamzold.com

YOUR **Community**
REALTY™

ROYAL LEPAGE

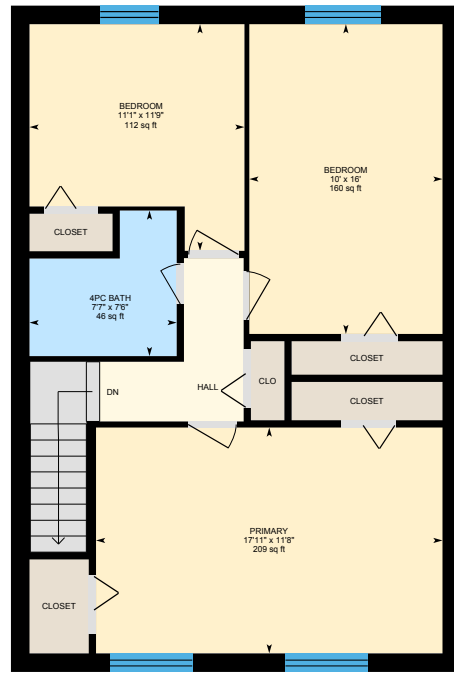
BROKERAGE INDEPENDENTLY OWNED & OPERATED

905.731.2000

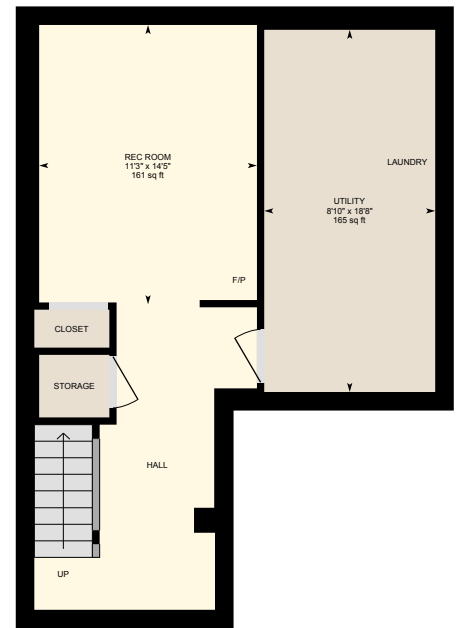
21 Hudson Crescent, Bradford West Gwillimbury



1st Floor



2nd Floor



Basement (Below Grade)





PUBLIC SCHOOLS

Your neighbourhood is part of a community of Public Schools offering Elementary, Middle, and High School programming.

Fieldcrest ES

Designated Catchment School
Grades PK to 8
100 Professor Day Dr

Bradford DHS

Designated Catchment School
Grades 9 to 12
70 Professor Day Dr

É Élé La Source

Designated Catchment School
Grades PK to 6
70 Madeline Dr

É Roméo Dallaire

Designated Catchment School
Grades 7 to 12
736 Essa Rd

CATHOLIC SCHOOLS

Your neighbourhood is part of a community of Catholic Schools offering Elementary, Middle, and High School programming.

St. Teresa of Calcutta Catholic School

Grades PK to 8
110 Northgate Dr

ÉÉC Jean-Béliveau

Grades PK to 6
19300 2nd Concession Rd

Holy Trinity HS

Grades 9 to 12
100 Melbourne Dr

ÉSC Renaissance

Grades 7 to 12
700 Bloomington Rd

PRIVATE SCHOOLS

The private schools nearest to you are:

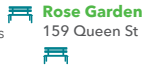


King Christian School

Grades K to 8
19740 Bathurst St

PARKS & REC.

This home is located in park heaven, with 4 parks and a long list of recreation facilities within a 20 minute walk from this address.



Rose Garden
159 Queen St



5 mins



Bradford West Gwillimbury Leisure Centre
471 West Park Ave



10 mins



Davey Lookout
33 Noble Drive



6 mins

FACILITIES WITHIN A 20 MINUTE WALK

2 Playgrounds
3 Pools
2 Rinks
1 Sports Field
1 Track
1 Community Centre
1 Botanical Garden
1 Fitness/Weight Room
1 Gym

TRANSIT

For convenient travel around the city, public transit is accessible from this home.



Nearest Rail Transit Stop
Bradford GO



Nearest Street Level Transit Stop
Barrie St. @ Doctors Lane



12 mins

SAFETY

With safety facilities in the area, help is always close by. Facilities near this home include a fire station, a police station, and a hospital within 11.51km.



Southlake Regional Health Centre
596 Davis Dr



Fire Station
75 Melbourne Drive



Police Station
81 Melbourne Drive



Disclaimer: These materials have been prepared for show@teamzold.com and are not intended to solicit buyers or sellers currently under contract with a brokerage. By accessing this information you have agreed to our terms of service, which are hereby incorporated by reference. This information may contain errors and omissions. You are not permitted to rely on the contents of this information and must take steps to independently verify its contents with the appropriate authorities (school boards, governments etc.). As a recipient of this information, you agree not to hold us, our licensors or the owners of the information liable for any damages, howsoever caused.

Delightful Semi-Detached Home In Bradford: Your Private Oasis Awaits

Welcome To This Great Semi-Detached Home, Nestled In The Heart Of Bradford. This Property Offers A Perfect Blend Of Comfort, Convenience, And Tranquility, Making It An Ideal Retreat For Families And Individuals Alike. As You Approach This Charming Home, You'll Be Greeted By Its Inviting Curb Appeal And The Promise Of A Warm And Welcoming Interior. Step Inside To Discover A Bright And Airy Living Space, Thoughtfully Designed To Accommodate Modern Living. The Main Floor Offers An Excellent Opportunity To Create An Open-Concept Layout, Allowing For Seamless Flow Between The Living, Dining, And Kitchen Areas. Large Windows Flood The Space With Natural Light, Creating A Cheerful And Inviting Atmosphere. The Home Features Three Generously Sized Bedrooms, Each Providing A Sanctuary For Rest And Relaxation. The Well-Maintained Interior Reflects The Care And Attention Given To The Property Over The Years, With Many Of The Major Items Updated To Ensure Comfort And Peace Of Mind. One Of The Standout Features Of This Home Is The Private Backyard Oasis. Step Outside To Your Own Personal Retreat, Complete With A Large Deck And A Hot Tub Nestled Under A Charming Pergola. The Treed Backyard Offers Privacy And A Serene Setting For Outdoor Gatherings, Barbecues, Or Simply Unwinding After A Long Day. Imagine Soaking In The Hot Tub Under The Stars, Surrounded By The Soothing Sounds Of Nature. Located On A Quiet Crescent, This Home Provides A Peaceful And Safe Environment For Families. The Neighborhood Is Known For Its Friendly Atmosphere And Strong Sense Of Community. You'll Also Enjoy The Convenience Of Being Close To A World-Class Recreation Center, Shopping, Restaurants, Schools, And Scenic Trails. For Those Who Love The Outdoors, Lake Simcoe Is Just A Short Drive Away, Offering Endless Opportunities For Boating, Fishing, And Lakeside Relaxation.

This Home Is More Than Just A Place To Live; It's A Lifestyle. Experience The Perfect Blend Of Comfort, Convenience, And Tranquility In One Of Bradford's Most Sought-After Communities. Don't Miss The Opportunity To Make This Exceptional Property Your Own. Schedule A Viewing And Discover The Endless Possibilities That Await You In This Beautiful Home.

All Existing Appliances: LG White French Door Fridge, Hotpoint White Stove, Kenmore White Built-In Microwave, LG White Built-In Dishwasher, Maytag White Washer, GE White Dryer, Fireplace In Basement, CVAC, Furnace, AC, Kenmore Electronic Air Cleaner, All Electrical Light Fixtures, All Window Coverings, Hot Tub, Garage Door Opener and Remote. Excluded: Electric Fireplace in Living Room, Mini Fridge and Freezer In Basement. Rental: Hot Water Tank

Lot: 29.52 ft x 111.54 ft | Taxes: \$3,433.16/2024

Royal LePage Your Community Realty Brokerage does not warrant or guarantee the information in this feature sheet.

