

WELCOME TO

16 McClintock Crescent

[www.16mcclintock.com](http://www.16mcclintock.com)



**Marek Kloda**  
Broker



TEAM **ZOLD**

Your Home • Your Life • Your Realtors

*Working For You!*

905.731.2000  
[www.teamzold.com](http://www.teamzold.com)



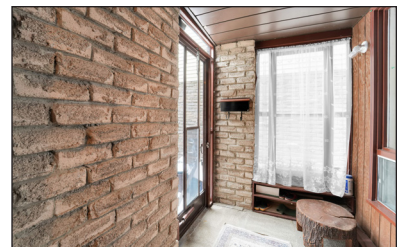
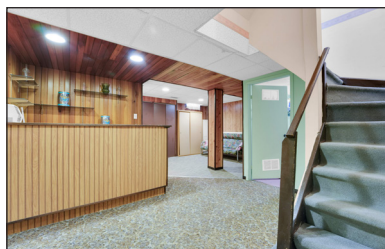
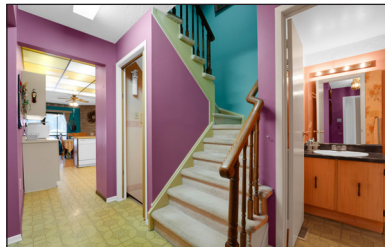
ROYAL LEPAGE  
**CHAIRMAN'S CLUB**  
NATIONAL  
TOP 1%  
LIFETIME MEMBER



**Shawn Zigelstein**  
Broker

*16 McClintock Crescent, Thornhill*





## PUBLIC SCHOOLS

Your neighbourhood is part of a community of Public Schools offering Elementary, Middle, and High School programming.

### Louis-Honoré Fréchette PS

Designated Catchment School  
Grades 1 to 8  
40 New Westminster Dr

### Charlton PS

Designated Catchment School  
Grades PK to 8  
121 Joseph Aaron Blvd

### ÉÉ Paul-Deemers

Designated Catchment School  
Grades PK to 6  
100 Ravel Rd

### Hodan Nalayah SS

Designated Catchment School  
Grades 9 to 12  
1401 Clark Ave W

### ÉS Norval-Morrisseau

Designated Catchment School  
Grades 7 to 12  
51 Wright St

### Other Local Schools

**Claude Watson School for the Arts**  
Grades 4 to 8  
130 Doris Ave

## ALTERNATIVE & SPECIAL SCHOOLS

Nearby alternative and special education schools include:

### North West Secondary Alternative School

Grades 10 to 12  
425 Patricia Ave

### Bright Start Academy

Grades 1 to 12  
4630 Dufferin St



## CATHOLIC SCHOOLS

Your neighbourhood is part of a community of Catholic Schools offering Elementary, Middle, and High School programming.

### St Joseph the Worker Catholic ES

Grades PK to 8  
475 Brownridge Dr

### ÉÉC Le-Petit-Prince

Grades PK to 6  
79 Avro Rd

### St Elizabeth Catholic HS

Grades 9 to 12  
525 New Westminster Dr

### ÉSC Renaissance

Grades 7 to 12  
700 Bloomington Rd

## PARKS & REC.

This home is located in park heaven, with 4 parks and a long list of recreation facilities within a 20 minute walk from this address.



**Conley Park North**  
120 Conley St  
1 min



**Festival Park**  
200 Fisherville Rd  
4 mins



**Conley Park South**  
135 Conley St  
3 mins



**FACILITIES WITHIN A 20 MINUTE WALK**  
3 Playgrounds  
3 Tennis Courts  
5 Basketball Courts  
2 Ball Diamonds  
2 Sports Fields  
2 Sports Courts  
1 Trail

## TRANSIT

Public transit is at this home's doorstep for easy travel around the city. The nearest street transit stop is only a 3 minute walk away and the nearest rail transit stop is a 49 minute walk away.

**Nearest Rail Transit Stop**  
York University

**Nearest Street Level Transit Stop**  
New Westminster Dr / Conley St



## SAFETY

With safety facilities in the area, help is always close by. Facilities near this home include a fire station, a police station, and a hospital within 7.92km.

**Humber River Hospital**  
1235 Wilson Ave

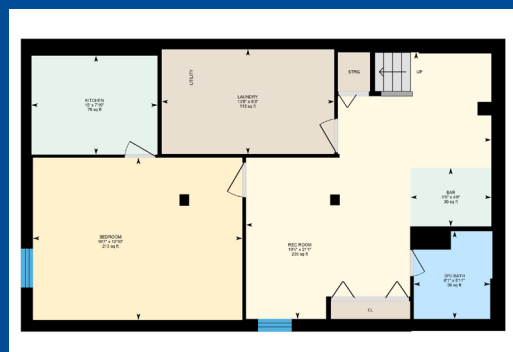
**Fire Station**  
835 Clark Ave W

**Police Station**  
30 Ellerlie Ave

## FINANCE



**Ernie Zambri**  
Your Mortgage Planner  
Licence #M08001763  
M: (416) 571-2842  
E: ernie@mortgagebroker.ca



\*\*\* Welcome to the quiet, family-friendly Lakeview Estates! \*\*\*

This all-brick 3 + 1 bedroom 4 bathroom home offers a rare blend of tranquility and potential, backing directly onto Conley Park's trails, playgrounds, and green spaces. Bathed in afternoon sunlight from its west-facing yard, this well-maintained property balances original charm with functional living spaces, inviting you to modernize or personalize its timeless foundation.

The main floor features spacious dining room with cozy family room and open kitchen with breakfast area and fireplace ideal for gatherings. The finished basement adds versatility with a kitchen, bedroom, rec area, and 3 piece bathroom—perfect for guests, extended family, or rental income. While lovingly cared for, the home's mostly original condition leaves room for your vision, whether through simple updates or full-scale renovations. Outside, enjoy a sunny backyard oasis with vegetable gardens, berry bushes, and fruit trees, alongside the convenience of park access just steps from your door. The brick exterior ensures low-maintenance durability and classic curb appeal. Located minutes from top schools (including French Immersion), TTC routes to Finch Subway and York University, and Promenade Mall's amenities, this home blends suburban serenity with urban convenience. Included are "as is" essentials like two fridges, stoves, dishwasher, washer, dryer, window coverings, central A/C, and central vacuum.

Ideal for families, investors, or downsizers seeking space and potential, 16 McClintock Cres is a blank slate ready to reflect your lifestyle. Schedule a viewing and start crafting your future in this park-side location.