

WELCOME TO

8 Cedar Springs Drive

www.8CedarSprings.com



Shawn Zigelstein
Broker



ROYAL LEPAGE
CHAIRMAN'S CLUB
NATIONAL TOP 1%
LIFETIME MEMBER

TEAM ZOLD

Your Home • Your Life • Your Realtors

Working For You!

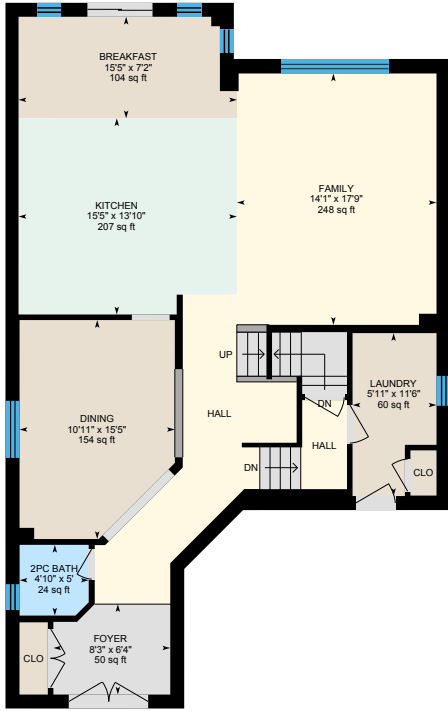
905.731.2000
www.teamzold.com

YOUR
Community
REALTY™

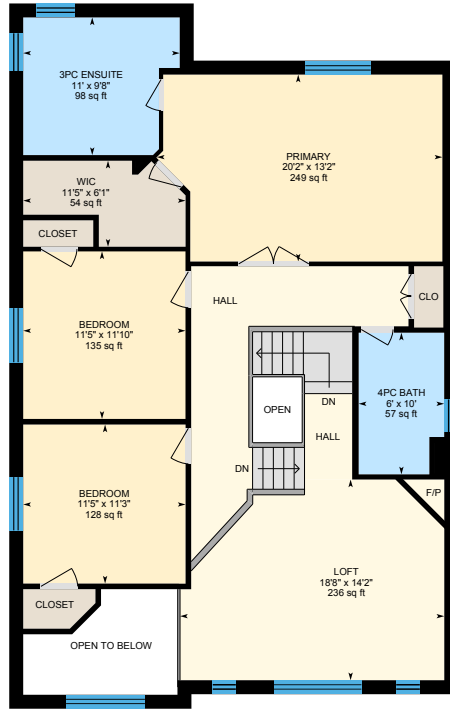
ROYAL LEPAGE

BROKERAGE INDEPENDENTLY OWNED & OPERATED

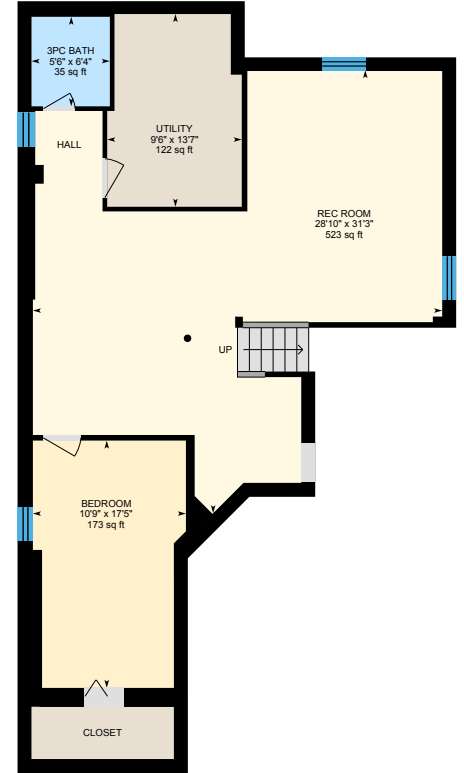
8 Cedar Springs Drive, Richmond Hill



Main Floor

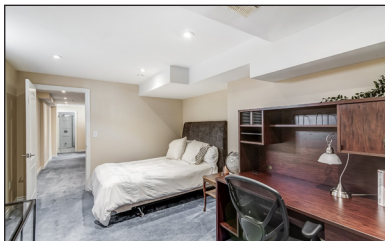
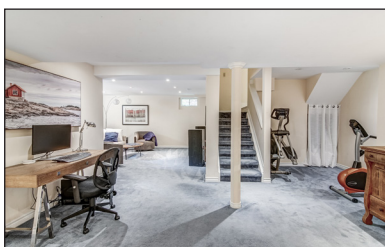


2nd Floor



Basement (Below Grade)





PUBLIC SCHOOLS

Your neighbourhood is part of a community of Public Schools offering Elementary, Middle, and High School programming.

Silver Pines PS

Designated Catchment School
Grades PK to 8
112 Stave Crescent

Académie de la Moraine

Designated Catchment School
Grades PK to 6
115 George St

Richmond Hill HS

Designated Catchment School
Grades 9 to 12
201 Yorkland St

Michaëlle Jean PS

Designated Catchment School
Grades 1 to 3
320 Shirley Dr

Beverley Acres PS

Designated Catchment School
Grades 4 to 8
283 Neal Dr

ÉS Norval-Morrisseau

Designated Catchment School
Grades 7 to 12
51 Wright St

ALTERNATIVE & SPECIAL SCHOOLS

Nearby alternative and special education schools include:

YRDSB Continuing Education

Grades 9 to 12
11160 Yonge St

Dr. Bette Stephenson Centre for Learning

Grades 9 to 12, Adult
36 Regatta Ave



CATHOLIC SCHOOLS

Your neighbourhood is part of a community of Catholic Schools offering Elementary, Middle, and High School programming.

Father Henri Nouwen Catholic ES

Grades PK to 8
121 Larratt Ln

ÉÉC Le-Petit-Prince

Grades PK to 6
79 Avro Rd

St Theresa of Lisieux Catholic HS

Grades 9 to 12
230 Shaftsbury Ave

ÉSC Renaissance

Grades 7 to 12
700 Bloomington Rd



PRIVATE SCHOOLS

The private schools nearest to you are:



TMS School - Elgin Mills

Grades 9 to 12
500 Elgin Mills Rd E

Richland Academy

Grades PK to 8
11570 Yonge St

Century Private School

Grades PK to 12
11181 Yonge St

Alpha Star High School

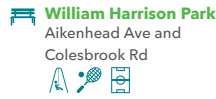
Grades 9 to 12
10670 Yonge St

PARKS & REC.

This home is located in park heaven, with 4 parks and a long list of recreation facilities within a 20 minute walk from this address.



Larrat Lea Park
Springer Dr. and Canyon Creek Ave
5 mins



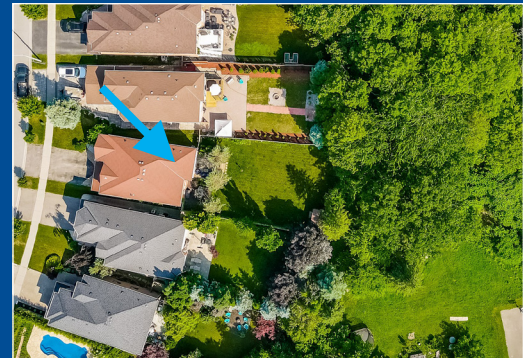
William Harrison Park
Aikenhead Ave and Colesbrook Rd
9 mins



Alias Grace Park
11 Courtney Cres
7 mins



FACILITIES WITHIN A 20 MINUTE WALK
4 Playgrounds
5 Tennis Courts
3 Basketball Courts
1 Sports Field
1 Sports Court



TRANSIT

Public transit is at this home's doorstep for easy travel around the city. The nearest street transit stop is only a 3 minute walk away and the nearest rail transit stop is a 45 minute walk away.



Nearest Rail Transit Stop
Richmond Hill GO



Nearest Street Level Transit Stop
Shaftsbury Av / Brookside Rd



3 mins

SAFETY

With safety facilities in the area, help is always close by. Facilities near this home include a fire station, a hospital, and a police station within 3.18km.



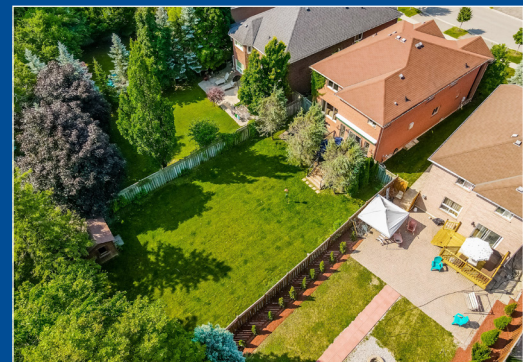
Mackenzie Richmond Hill Hospital
10 Trench St



Fire Station
101 Gamble Road



Police Station
171 Major Mackenzie Drive West



Disclaimer: These materials have been prepared for shawn@teamzold.com and are not intended to solicit buyers or sellers currently under contract with a brokerage. By accessing this information you have agreed to our terms of service, which are hereby incorporated by reference. This information may contain errors and omissions. You are not permitted to rely on the contents of this information and must take steps to independently verify its contents with the appropriate authorities (school boards, governments etc.). As a recipient of this information, you agree not to hold us, our licensors or the owners of the information liable for any damages, howsoever caused.

WESTBROOK OPEN CONCEPT FAMILY HOME THAT IS GREAT FOR ENTERTAINING ON A SPECTACULAR EXTRA DEEP LOT

Located On A Nice Quiet Street Backing To Trees, This Wonderful Home Has All Of The Features That You Need To Just Move In And Enjoy. The Renovations To The Main Floor Are Amazing - The Kitchen Is Right Out Of A Magazine And Has Been Opened Up To The Family Room Which Is Great For Large Family Gatherings. The Loft Area Gives You A Ton Of Extra Space With Double Height Ceilings. Private Backyard Oasis Complete With Garden Shed, Upgraded Large Deck, And Extra Depth With Lots Of Room For A Pool Or Massive Patio. The Layout Gives The Option Of Having An Entrance To The Basement From The Laundry Room To Have Extended Family Or Grown Kids With Their Own Entrance. The Home Is Zoned For The Top Schools In York Region - Richmond Hill High School And St. Theresa's And Is A Close Walk To Parks, Trails, Transit And Shopping. Book A Visit Today To See This Spectacular Place. You Will Love It.

So Many Upgrades Over The Years - Windows, Roof, Pot Lights, Furnace, HWT, Flooring, Deck With Awning, Professionally Finished Basement With 3 Pc Bathroom, Bedroom, And Rec Room. This Home Is A Must See. Your New Home Is Here And Ready!

Extras: All Existing Appliances: Kitchen Aid Induction Flat Top, Kitchen Aid Hood Fan, Kitchen Aid Stainless Steel Built-In Dishwasher, Kitchen Aid Stainless Steel Wall Oven, Kitchen Aid Stainless Steel Microwave, Speakers In Kitchen; Whirlpool White Washer, Whirlpool White Dryer, All Electrical Light Fixtures, All Window Coverings, Furnace (2014), A/C, CVAC, Garage Door Opener and Remote, Shed and Awning in Backyard.

Exclusions: Speakers in Living Room, TVs and Mounts, Whirlpool White Fridge In Basement Rental: Hot Water Tank

Lot: 37.53 ft x 166.98 ft | Taxes: \$6,887.58/ 2022