

WELCOME TO

29 Mayvern Crescent

www.29Mayvern.com



**Shawn
Zigelstein**
Broker

TEAM **ZOLD**

Your Home • Your Life • Your Realtors

Working For You!

905.731.2000
www.teamzold.com



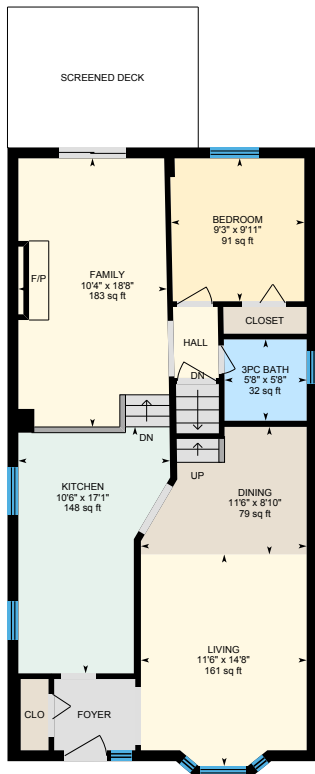
ROYAL LEPAGE
CHAIRMAN'S CLUB
NATIONAL TOP 1%
LIFETIME MEMBER

YOUR **Community**
REALTY™

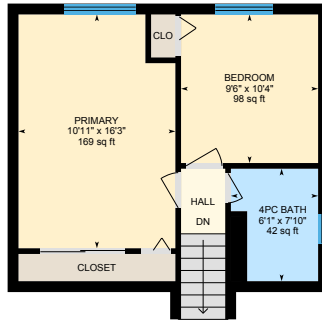
ROYAL LEPAGE

BROKERAGE INDEPENDENTLY OWNED & OPERATED

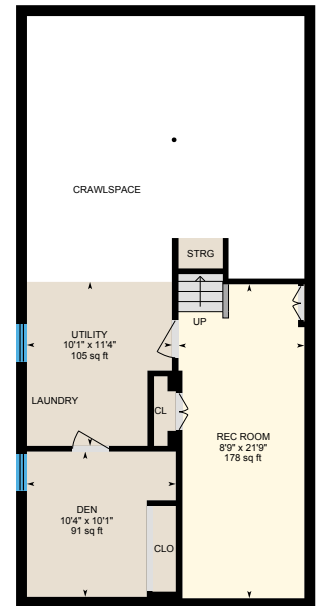
29 Mayvern Crescent, Richmond Hill



Main Floor



2nd Floor



Basement (Below Grade)





PUBLIC SCHOOLS

Your neighbourhood is part of a community of Public Schools offering Elementary, Middle, and High School programming.

Ross Doan PS

Designated Catchment School
Grades PK to 3
101 Weldrick Rd W

Académie de la Moraine

Designated Catchment School
Grades PK to 6
115 George St

Langstaff SS

Designated Catchment School
Grades 9 to 12
106 Garden Ave

Adrienne Clarkson PS

Designated Catchment School
Grades 1 to 8
68 Queens College Dr

Roselawn PS

Designated Catchment School
Grades 4 to 8
422 Carrville Rd

ÉS Norval-Morrisseau

Designated Catchment School
Grades 7 to 12
51 Wright St

ALTERNATIVE & SPECIAL SCHOOLS

Nearby alternative and special education schools include:

Kayla's Children Centre

Grades PK to 8, Ungraded
36 Atkinson Ave

YRDSB Continuing Education

Grades 9 to 12
11160 Yonge St

CATHOLIC SCHOOLS

Your neighbourhood is part of a community of Catholic Schools offering Elementary, Middle, and High School programming.

St Charles Garnier Catholic ES

Grades PK to 8
16 Castle Rock Dr

ÉEC Le-Petit-Prince

Grades PK to 6
79 Avro Rd

St Theresa of Lisieux Catholic HS

Grades 9 to 12
230 Shaftsbury Ave

ÉSC Renaissance

Grades 7 to 12
700 Bloomington Rd

PRIVATE SCHOOLS

The private schools nearest to you are:



Highland Academy of Canada

Grades 9 to 12
9600 Bathurst St

UMCA Rich Tree Academy

Grades PK to 12
9600 Bathurst Street

Toronto Waldorf School

Grades PK to 12
9100 Bathurst St

As-Sadiq Islamic School

Grades PK to 12
9000 Bathurst St

PARKS & REC.

This home is located in park heaven, with 4 parks and 7 recreation facilities within a 20 minute walk from this address.



Wood's Park

530 Carrville Rd



3 mins



Hillcrest Heights Park

Castle Rock Dr. and Kitsilano Ct



5 mins



Carrville Park

Okanagan Dr and Keremeos Ct



5 mins

FACILITIES WITHIN A 20 MINUTE WALK

1 Playground 3 Trails
2 Ball Diamonds



TRANSIT

Public transit is at this home's doorstep for easy travel around the city. The nearest street transit stop is only a 4 minute walk away and the nearest rail transit stop is a 37 minute walk away.



Nearest Rail Transit Stop

Langstaff GO



Nearest Street Level Transit Stop

Carrville Rd / Ayr Rd



4 mins

SAFETY

With safety facilities in the area, help is always close by. Facilities near this home include a fire station, a hospital, and a police station within 2.18km.



Mackenzie Richmond Hill Hospital

10 Trench St



Fire Station

191 Major Mackenzie Drive West



Police Station

171 Major Mackenzie Drive West

HoodQ

Disclaimer: These materials have been prepared for shawn@teamzold.com and are not intended to solicit buyers or sellers currently under contract with a brokerage. By accessing this information you have agreed to our terms of service, which are hereby incorporated by reference. This information may contain errors and omissions. You are not permitted to rely on the contents of this information and must take steps to independently verify its contents with the appropriate authorities (school boards, governments etc.). As a recipient of this information, you agree not to hold us, our licensors or the owners of the information liable for any damages, howsoever caused.

THAT SPECIAL PLACE THAT YOU CAN MOVE RIGHT IN AND FALL IN LOVE

This Amazing Opportunity Has Just Hit The Market And Is Ready For You And Your Family. So Many Amazing Options Available Here - Just Pick The One That Works Best For You. Backsplit Home On A Mature Treed Lot With Tons Of Privacy On All Sides. So Much Space Available For A Growing Family Or Someone Looking To Downsize Into Something Smaller From A Larger Home In The Area - Its All Up To You To Decide. Are You Looking To Build Something Custom? This Street As Well As The Surrounding Ones Have Them Popping Up On Smaller Lots, So You Have a 50 x 120 Ft Lot Here That You Will Be Able To Build Your Dream Home If You So Choose. The Home That You Have Here Has Been Meticulously Maintained, With New Windows, Furnace, AC, Flooring, Staircases And Pickets, Gas Fireplace, Sunroom, Shed, Appliances, And So Much More!

This Is A Must See On An Amazing Street And Is Close To Schools, Trails, Parks, And Public Transit. Come Visit.

Extras: All Existing Appliances: Maytag Stainless Steel Gas 5 Burner Stove With Dual Oven, Samsung Stainless Steel French Door Fridge, Bosch Stainless Steel Built-In Dishwasher, Sakura Stainless Steel Hood Fan, LG Grey Washer, LG Grey Dryer, Gas Fireplace, Nest Thermostat, Nest Protect, All Electrical Light Fixtures, Window Coverings Unless Excluded, Furnace, A/C, 2 Wardrobes In Primary Bedroom, All TV Mounts, Garage Door Opener And Remote, Exterior Video Cameras With All Accessories (Hard Drive and Monitor), 3 Season Gazebo, Garden Shed.

Excluded: All TVs, Mailbox, Rods and Drapes, BBQ | Rental: Hot Water Tank

Lot: Irregular: 51.05 ft x 120.55 ft. | Taxes: \$5,773.79 / 2023

Royal LePage Your Community Realty Brokerage does not warrant or guarantee the information in this feature sheet.