

WELCOME TO

2188 Denby Drive

www.2188Denby.com



Vanessa Oliveira
Sales Representative



TEAM **ZOLD**

Your Home • Your Life • Your Realtors

Working For You!

905.731.2000
www.teamzold.com

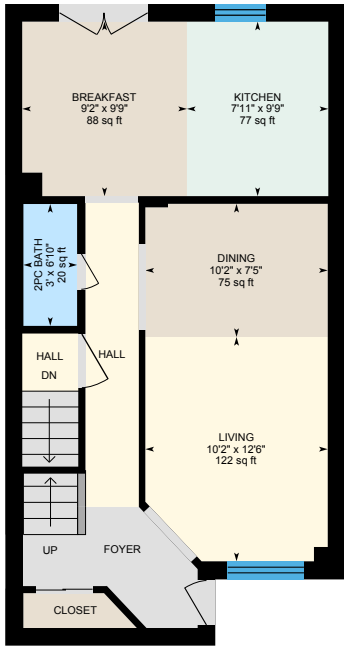


ROYAL LEPAGE
CHAIRMAN'S CLUB
NATIONAL TOP 1%
LIFETIME MEMBER

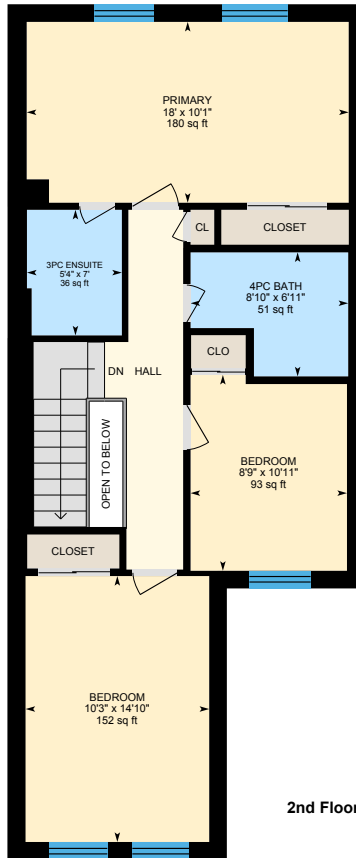


Shawn Zigelstein
Broker

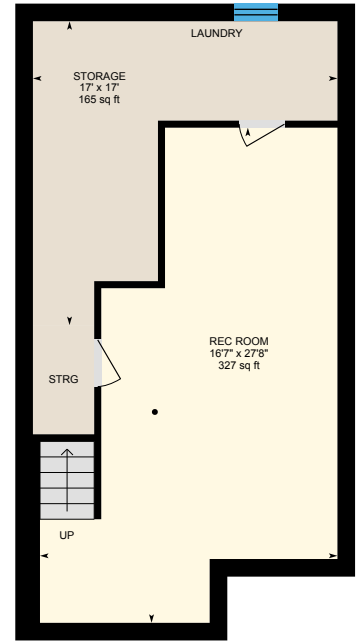
2188 Denby Dr, Pickering



Main Floor



2nd Floor



Basement (Below Grade)





PUBLIC SCHOOLS

Your neighbourhood is part of a community of Public Schools offering Elementary, Middle, and High School programming.

É Élém Ronald-Marion

Designated Catchment School
Grades PK to 6
2235 Brock Rd

ÉS Ronald-Marion

Designated Catchment School
Grades 7 to 12
2235 Brock Rd

Valley Farm PS

Designated Catchment School
Grades PK to 8
1615 Pepperwood Gate

Pine Ridge SS

Designated Catchment School
Grades 9 to 12
2155 Liverpool Rd

ALTERNATIVE & SPECIAL SCHOOLS

Nearby alternative and special education schools include:

Father Donald MacLellan Catholic Secondary

Grades 9 to 12
458 Fairall St

Exceptional Learning Centre

Grades K to 8
520 Westney Rd S



CATHOLIC SCHOOLS

Your neighbourhood is part of a community of Catholic Schools offering Elementary, Middle, and High School programming.

St. Wilfrid Catholic School

Grades PK to 8
2360 Southcott Rd

ÉÉC Notre-Dame-de-la-Jeunesse-Ajax

Grades PK to 6
71 Ritchie Ave

St. Mary Catholic Secondary School

Grades 9 to 12
1918 whites Rd

ÉSC Saint-Charles-Garnier

Grades 7 to 12
4101 Baldwin St S

PRIVATE SCHOOLS

The private schools nearest to you are:



Blaisdale Montessori School - Village Campus

Grades PK to 3
56 Old Kingston Rd

Brock Elementary School

Grades PK to 8
2065 Brock Rd

Harwood Montessori School

Grades PK to 3, Ungraded
23 Church St S

Blaisdale Montessori School - Westney Campus

Grades PK to 8
20 O'Brien Ct



PARKS & REC.

This home is located in park heaven, with 4 parks and a long list of recreation facilities within a 20 minute walk from this address.



Major Oaks Park
1400 Major Oaks Rd
3 mins



Uman Park
Salfin Drive
7 mins



Centennial Park
2251 Brock Rd
7 mins



FACILITIES WITHIN A 20 MINUTE WALK
4 Playgrounds
5 Ball Diamonds
2 Sports Fields
2 Sports Courts
1 Outdoor Games Facility



TRANSIT

Public transit is at this home's doorstep for easy travel around the city. The nearest street transit stop is only a minute walk away and the nearest rail transit stop is a 39 minute walk away.

Nearest Rail Transit Stop
Pickering GO

Nearest Street Level Transit Stop
Dorchester Southbound at Derby



1 min

SAFETY

With safety facilities in the area, help is always close by. Facilities near this home include a police station, a fire station, and a hospital within 5.75km.

Lakeland Health - Ajax Pickering Hospital
580 Hurwood Ave S

Fire Station
1115 Finch Avenue

Police Station
1710 Kingstee Rd



Disclaimer: This website has been prepared by HoodQ Inc. and is for informational purposes only. It is not intended to constitute an offer of real estate services. HoodQ Inc. is not a real estate broker and does not have a license to sell real estate. For more information, please contact your local real estate professional. HoodQ Inc. is not responsible for the accuracy of the information provided on this website. HoodQ Inc. is not a real estate broker and does not have a license to sell real estate. For more information, please contact your local real estate professional.

*****PERFECT STARTER HOME FOR A GROWING FAMILY OR SOMEONE LOOKING TO DOWNSIZE IN THE HIGH DEMAND NEIGHBOURHOOD OF BROCK RIDGE*****

Welcome To Your New Home! This Beautiful Sun Filled Detached Home Is Ideal For First-Time Home Buyers Or Anyone Looking To Downsize And Is Situated In The Family Friendly Neighbourhood Of Brock Ridge. Turn-Key & Move-In Ready, This 3 Bedroom 3 Bathroom Home Is A Must See – Tastefully Renovated From Top To Bottom With So Many Upgrades! Fully Equipped With Smart Home Features Such As Nest Thermostat, Ring Doorbell & Camera System, Nest Smoke Detectors & Chamberlain Garage Door Opener. Other Upgrades Include Polk Audio In-Ceiling Speakers, All Brand New Windows (2023) And More! Spend Your Summers Making Memories And Hanging Out In The Private Backyard Oasis, Complete With A Massive Family Sized Deck And Vegetable Garden. Enjoy Having Your Morning Cup Of Coffee Out On The Oversized Front Porch Overlooking The Garden. This Area Speaks For Itself, Located In The Historic Pickering Village Neighbourhood, This Beautifully Functional Home Is Surrounded By Parks, Trails And All The Amenities You Could Want. Enjoy The benefits Of A Peaceful Environment While Being Within Proximity To Essential Amenities. Steps Away From Highly-Rated Schools, Pickering Town Centre, Golf Courses, Pickering GO Station, Shopping Plazas, Costco, Restaurants, Highway 401/407 And More. Location Is Unbeatable - This One Checks All the Boxes! Don't Miss Your Chance To Call This House Your Home.

Extras: All Existing Appliances: LG Stainless Steel Fridge, LG Stainless Steel Dishwasher, LG Stainless Steel Stove, Whirlpool Stainless Steel Microwave Range Hood; Whirlpool Washer, Maytag Dryer, All Electrical Light Fixtures, All Window Coverings, Furnace, Air Conditioner, Hot Water Tank, Humidifier, Polk Audio In-Ceiling Speakers, Nest Thermostat, Ring Doorbell & Camera System, Nest Smoke Detectors, Chamberlain Smart Garage Door Opener, New Windows (2023), New Attic Insulation (2023)

Lot: 24.85 ft x 102.69 ft | Taxes: \$4,479.93/2023

Royal LePage Your Community Realty Brokerage does not warrant or guarantee the information in this feature sheet.