

WELCOME TO

14 Sir Gareth Court

www.14SirGareth.com



Sarah Norris
Sales Representative



TEAM **ZOLD**

Your Home • Your Life • Your Realtors

Working For You!

905.731.2000
www.teamzold.com



ROYAL LEPAGE
CHAIRMAN'S CLUB
NATIONAL TOP 1%
LIFETIME MEMBER

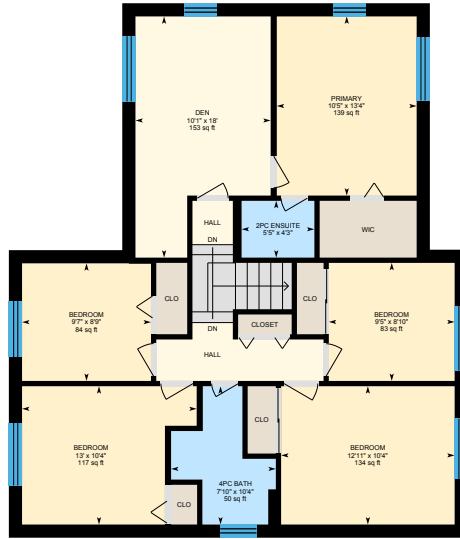


Shawn Zigelstein
Broker

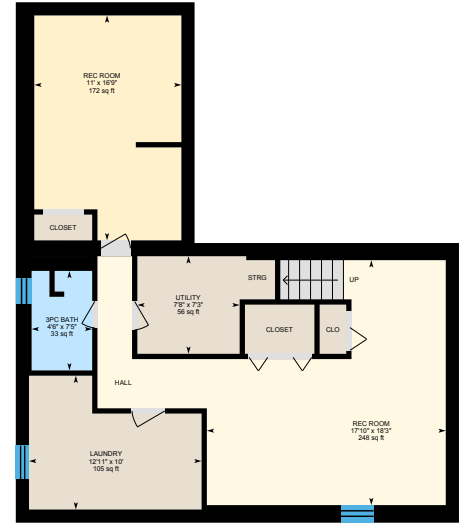
14 Sir Gareth Court, Markham



Main Floor

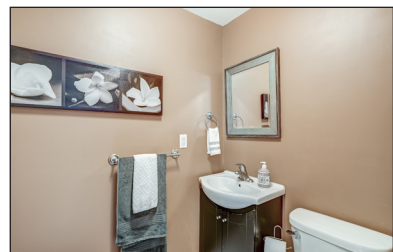


2nd Floor



Basement (Below Grade)





PUBLIC SCHOOLS

Your neighbourhood is part of a community of Public Schools offering Elementary, Middle, and High School programming.

Reesor Park PS

Designated Catchment School
Grades PK to 8
69 Wootten Way N

Markham DHS

Designated Catchment School
Grades 9 to 12
89 Church St

Académie de la Moraine

Designated Catchment School
Grades PK to 6
115 George St

ÉS Norval-Morrisseau

Designated Catchment School
Grades 7 to 12
51 Wright St

CATHOLIC SCHOOLS

Your neighbourhood is part of a community of Catholic Schools offering Elementary, Middle, and High School programming.

St Brother André Catholic HS

Grades 9 to 12
6160 16th Ave

St Joseph Catholic ES

Grades PK to 8
388 White's Hill Ave

Kateri Tekakwitha Catholic ES

Grades 1 to 8
230 Fincham Ave.

École catholique Pape-François

Grades PK to 12
276 Sunset Blvd

PRIVATE SCHOOLS

The private schools nearest to you are:



Yip's Collegiate School

Grades 9 to 12
7700 Brimley Rd

Cambridge Academy

Grades 9 to 12
5873 ON-7

Wesley Christian Academy

Grades PK to 8
22 Heritage Rd

Unionville Montessori School

Grades PK to 6
4486 16th Ave

PARKS & REC.

This home is located in park heaven, with 4 parks and a long list of recreation facilities within a 20 minute walk from this address.



Reesor Park
69 Wootten Way North

4 mins

Mintleaf Park
230 Fincham Ave

11 mins

Alma Walker Park
Linden Lea St

6 mins

FACILITIES WITHIN A 20 MINUTE WALK
5 Playgrounds
1 Rink
6 Tennis Courts
6 Basketball Courts
4 Ball Diamonds
11 Sports Fields
1 Splash Pad
3 Sports Courts
1 Trail

TRANSIT

Public transit is at this home's doorstep for easy travel around the city. The nearest street transit stop is only a 2 minute walk away and the nearest rail transit stop is a 21 minute walk away.

Nearest Rail Transit Stop
Markham GO

Nearest Street Level Transit Stop
Wootten Way / Parkway Av

2 mins

SAFETY

With safety facilities in the area, help is always close by. Facilities near this home include a hospital, a fire station, and a police station within 3.59km.

Markham Stouffville Hospital
381 Church St

Fire Station
3255 Bur Oak Ave

Police Station
8700 McCowan Road



HoodQ

Disclaimer: These materials have been prepared for show@teanzold.com and are not intended to solicit buyers or sellers currently under contract with a brokerage. By accessing this information you have agreed to our terms of service, which are hereby incorporated by reference. This information may contain errors and omissions. You are not permitted to rely on the contents of this information and must take steps to independently verify its contents with the appropriate authorities (school boards, governments etc.). As a recipient of this information, you agree not to hold us, our licensors or the owners of the information liable for any damages, however caused.

*****SUPERB LOCATION ON A FAMILY-FRIENDLY CUL-DE-SAC, COMPLETE WITH 2ND FLOOR NANNY SUITE!*****

You Don't Have To Look Any Further For Your Amazing 'Family' Home! This Home Boasts 4 Bedrooms, Plus A 2-Room Nanny Suite On The 2nd Floor! The Basement Is Finished, Complete With 2 Large Rec Rooms (One Can Be Converted To A Bedroom With Installation Of Window), A 3-Piece Bedroom, & A Ton Of Storage Space. With Over 2,840 Sq Ft Of Total Living Space, This Home Includes Gleaming Hardwood Floors On The Main, Open Concept Living/Dining, An Eat-In Kitchen, Huge Family Room With Fireplace & Walkout To Deck, Gardens, And Pool-Sized Fenced Yard. 2nd Floor Nanny Suite With 2 Rooms, 2 Piece Bathroom & Skylight. Large Deck With Built-In Benches; 2-Car Garage & Total Of 8 Pkg Spaces; Large Outdoor Shed; Separate Entrance To Basement (Through Garage). This Home Has Been Exceptionally Well Maintained, And Has The Most Incredible Perennial Gardens At Both The Front & Back. It Backs Directly Onto The Highly-Rated Reesor Park Public School (With Both English & French Immersion Programs), As Well As Reesor Park, And The New Markham Tennis Club.

This Property, Bright And Spacious, With Warm And Welcoming Karma, Is A Rare Gem. Close To All Amenities, Including Hwy 407, Hwy 7, Markham Main St., Shopping, Restaurants, Hospital, Bus Terminal, Sports Arenas/Fields, Golf, Many Schools, And So Much More.

Inclusions: All Existing Kitchen Appliances: Maytag Refrigerator, GE Stove, Rangehood, Bosch Dishwasher; LG Washer & Dryer; All Electrical Light Fixtures; All Window Coverings; Existing Closet Dividers; Garden Shed; Garage Door Opener & Remote; Furnace and A/C.

Exclusions: Work Bench in Garage | Rentals: Hot Water Heater

Lot: Irregular: 51.05 ft x 120.55 ft. | Taxes: \$5,773.79 / 2023

Royal LePage Your Community Realty Brokerage does not warrant or guarantee the information in this feature sheet.